



Lapwing Uppingham Road

, Skeffington, LE7 9YE

Auction Guide £220,000

MODERN METHOD OF AUCTION T's & C's APPLY A splendid and sizeable, three bedroom end of terrace home conveniently situated with superb road links to the city of Leicester, Market Harborough and county of Rutland. The accommodation briefly comprises: Entrance hall, cloakroom, good size lounge, dining area, fitted kitchen, master bedroom with fitted wardrobes, en-suite shower room, two further bedrooms and family bathroom. Outside is a front garden, good sized rear garden and multiple off road parking spaces. There are lovely views of open countryside to front and side. The property is offered to the market with **NO CHAIN!**

- Generous Three Bedroom End Terrace
- Conveniently Located With Good Road Links
- *Modern Method Of Auction T's & C's Apply*
- *Subject To Reserve Price*
- *Buyers Fees Apply*
- Open Plan Kitchen/Diner
- Master Bedroom With En-Suite
- Good Sized Rear Garden
- Off Road Parking For Multiple Vehicles
- Lovely Views To Front & Side

Viewing

Please contact our Market Harborough Sales Office on 01858 461888 or our Lutterworth office on 01455 888670 if you wish to arrange a viewing appointment for this property or require further information.



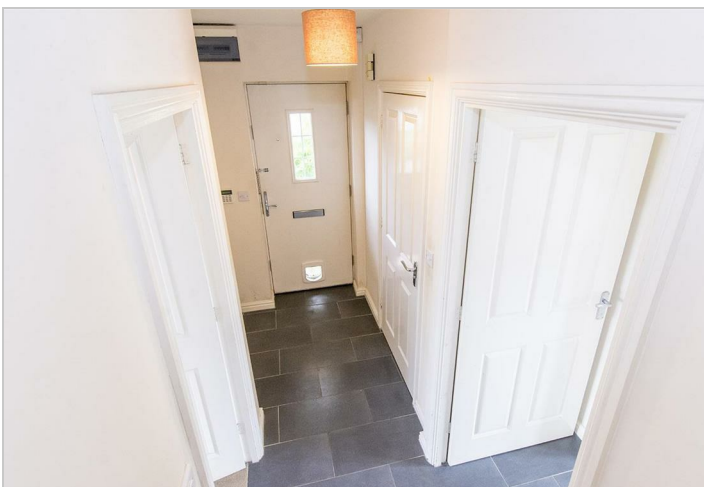
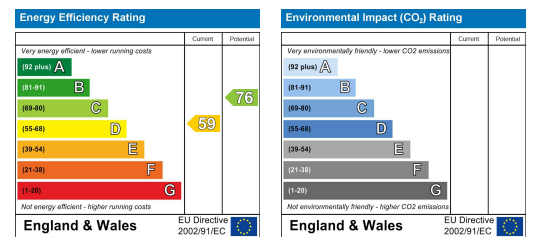
Floor Plan



Area Map



Energy Efficiency Graph



These particulars, whilst believed to be accurate are set out as a general outline only for guidance and do not constitute any part of an offer or contract. Intending purchasers should not rely on them as statements of representation of fact, but must satisfy themselves by inspection or otherwise as to their accuracy. No person in this firm's employment has the authority to make or give any representation or warranty in respect of the property.